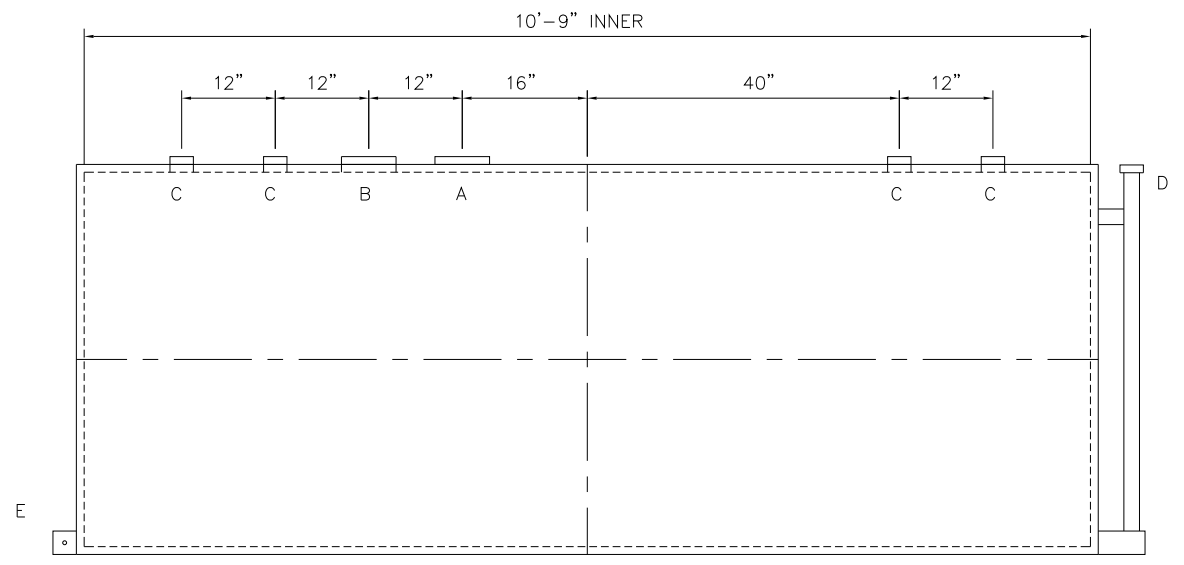
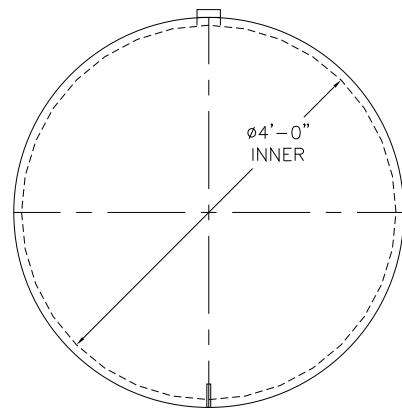


NOTE: ALL RIGHTS RESERVED. THIS DRAWING MUST NOT BE REPRODUCED IN ANY FORM WITHOUT THE WRITTEN PERMISSION OF HIGHLAND TANK®. HIGHLAND TANK® SHALL BE RESPONSIBLE ONLY FOR ITEMS INDICATED ON THIS FABRICATION DRAWING UNLESS OTHERWISE NOTED. CUSTOMER IS RESPONSIBLE FOR VERIFYING CORRECTNESS OF SIZE AND LOCATION OF FITTINGS, ACCESSORIES, AND COATINGS SHOWN ON THIS DRAWING.

TOUCH UP OF FINISHED PAINT IS REQUIRED BY INSTALLATION CONTRACTOR. TOUCH UP PAINT SHIPPED WITH TANK.



**DESIGN DATA**

CAPACITY - 1,000 GALLONS
TYPE - DOUBLE WALL - TYPE I
NO. REQ. - -
OPERATING PRESSURE - ATMOSPHERIC
TANK MATERIAL - MILD CARBON STEEL
THICKNESS - INNER- HEADS: 10 GA SHELL: 10 GA
THICKNESS - OUTER- HEADS: 10 GA SHELL: 10 GA
CONSTRUCTION - INNER - LAP WELD OUTSIDE ONLY
OUTER - LAP WELD OUTSIDE ONLY
TANK TEST - INNER - 5 PSIG
OUTER - 2 PSIG AND FULL VACUUM
INT. FINISH - NONE
-
EXT. FINISH - SHOP PRIMER
-
LABEL - UL 142

**LEGEND**

A	6" FITTING THROUGH OUTER SHELL ONLY - MARK WITH LABEL - SECONDARY EMERGENCY VENT USE ONLY
B	6" FITTING - PRIMARY EMERGENCY VENT USE
C	2" FITTING
D	2" INTERSTITIAL MONITOR PIPE
E	3" FLAT BAR GROUNDING LUG WITH 1/2" $\phi$ HOLE ON CL
F	-

 <b>Highland Tank®</b>	
1,000 GAL 48" $\phi$ AG DW HORIZONTAL	
CUSTOMER:	
PROJECT:	
QUOTE NO:	CHK'D BY:
SCALE: 3/4"=1'-0"	DATE:
DWG. BY:	DWG. NO: 01000AHDW48GA10